



The Borough of Irwin is a unique town located 22 miles southeast of Pittsburgh in Westmoreland County. Originally and unofficially named “Irwin Station” the residents voted to incorporate the village as the Borough of Irwin in the summer of 1864 naming it after the area’s founder, John Irwin.

THE BOROUGH BUZZ

FALL EDITION OF 2022

Borough of Irwin

424 Main Street
Irwin, PA 15642
724-864-3100

Office Hours

Monday – Friday
7:30 AM to 4:00 PM

Police/Fire/Ems

911

Mayor

Jeff Clem

Council Members

Rick Burdelski
Mike Yunn
Tyler Baum
Shawn Stitely
Leslie Savage
Frank Rossi
Ron Romeo

BOROUGH STAFF

Manager

Shari Martino

Billing Administrator

Katelind Sartori

Public Works

Director
Randy Altman

Planning/Zoning Manager

Shari Martino

Code Enforcement

Matt Sever & Katelind Sartori

Police Chief

Dan Wensel

Tax Collector

Lois Bennett

Recently, the Borough joined forces with Fight the Blight LLC to clean up a paper alley and restore the swell that was overgrown and malfunctioning. Here are before and after photos of each:



The Borough received a grant from the Pennsylvania DCED through the Westmoreland Conservation District for streambank restoration, with the goal of preventing erosion of the streambank adjacent to Irwin Park. Log vanes were put in to push the water to the center of the stream and create wildlife habitats. Also photographed is the rip rap area by the ball fields, which has created a relaxing view of the stream for a peaceful walk on the walking track. Not photographed are the retention ponds and the new retaining wall next to the amphitheater.

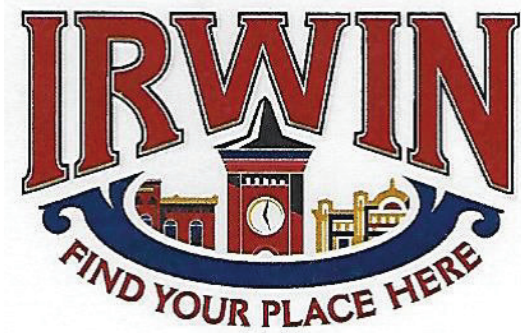


Irwin Borough Police Department is dispatched through Westmoreland County 911. All non-emergency and emergency calls should be placed through 911. While there is a non-emergency phone number listed on our website, Officers are typically with someone or patrolling. Please visit our website for educational materials on contacting 911 at <https://irwinborough.org/departments/police-department>.

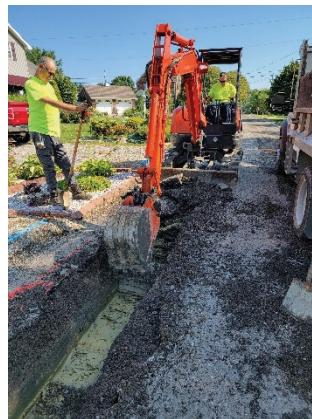


The intent of the JCP program is to provide the opportunity for high school and college students residing in the Borough of Irwin to gain first-hand experience in local government, public relations, communications, and community service by participating in Council-related activities, such as meetings and events, and guiding the newly created Junior Council Committee. This program is dedicated to promoting future leadership in the Borough, continuing a positive focus on youth outreach and, in a general sense, developing community resources and improvements in the best interest of Irwin residents.





Irwin Borough Public Works Department completed a small project on Willow. They created an underdrainage system for under the roadway. This will prevent spring water in the colder months damaging the roadways. Photos show the construction.



Help Make a Difference with Stormwater!

- Keep leaves and sticks out of storm inlets before, during, and after rain events. This will help prevent flooding.
- Wash vehicles on gravel or grass with biodegradable detergents and soap. This allows the ground to naturally filter the water before it enters the water table.
- Report any illegal dumping into inlets. Items to report include fluids, grass clippings, dirt, litter, and any other debris.
- Use pesticides, herbicides, and fertilizers carefully and sparingly, keeping them away from waterways. Excess can run off into streams where it can kill fish and promote overgrowth of algae.
- Clean up after pets. Feces left on the streets and sidewalks can wash into storm inlets and into the nearest stream.
- Repair leaks in your vehicle. Fluids leaking from a vehicle can wash directly into the stream, possibly killing fish and other aquatic life.
- Direct roof drains into a rain barrel or onto grass, as oils in the shingles can pollute the stormwater. Grass will filter out these oils.
- Sweep sidewalks and driveways instead of hosing them off. Using water washes dirt and debris into the streams.

You can see all our information regarding stormwater management on our website:
<https://irwinborough.org/community-resources/storm-water-management>